



COMMUNITY LIVING OPTIONS

"Together We Achieve"

ANNUAL REPORT 2017



"When I fill my soul with gratitude my light
shines brighter and my love spreads wider"

- J Richmond

A Few Words

We had a big birthday this year...30 years! When we started, we were called DCD, and our purpose was to find homes for the homeless individuals wandering the Kalamazoo Mall on Burdick Street. From the inception of helping a few men find homes so they did not freeze during the winter months, our agency has evolved into 10 homes which support individuals with a mental illness, substance abuse issue or an intellectual development disability.

Over the course of 30 years, our name has been changed, and our mission expanded; but our heart and soul remain committed to empowering people who may be struggling with their illness, regardless of whether it is mental, physical, or a combination to lead fulfilled lives. For some, that means a home that has staff that help get them up in the morning, help them bathe, and then transport them to work or their volunteer position. For others it may mean monitoring their health conditions and making sure that they get their medication on time and eat a healthy diet. CLO does all these things and more. We are there to run doctor appointments as well as get a person to the concert that he or she has been looking forward to. We believe our support extends beyond the care we provide and work to create relationships with open and honest communication and advocacy. As partners, we advocate for policies that support individuals leading productive lives in their communities.

That is why, "Together, We Achieve."

Fiorella Spalvieri, Executive Director



Board Members

Community Living Options

Casey Blair

Melissa Gilbert

Louise Kenny

Suzanne McPeck

Dawn Pantaleo

Ron Ryan

Joe Walls

Ed Wilson

Living Ways Foundation

Mark Comins

Dan Conklin

Steve Denenfeld

Tim Harding

Laurie Jefsen

Mike Kenny

Brad Lawton

Joan Young



Mission

CLO is a human services agency that provides a range of high-quality support services to people in need of residential care, in-home assistance or community living supports. We are committed to providing these services in a manner that respects individual choices, encourages the right of self-direction, and affirms the dignity of each individual.

Vision

Our vision is a community that supports people who need assistance to live a fulfilled life.

Values

We will offer services of superior quality in achieving the following outcomes:

- We affirm the right of all individuals to direct their lives.
- We are committed to ethical decision making; doing the right thing for our organization and the individuals we serve.
- We believe our service extends beyond the care we provide to each individual. We work to create an environment conducive to open and honest communication, advocacy, and working together as partners.
- We believe that those who serve in our organization are integral to the excellence of the agency and the high-quality services we provide.



Specialized Residential Home
Misty Creek Development

Programs & Services

The Alcott Center

This program gives individuals the opportunity to work one-on-one or in a small group with an instructor to improve an individual's ability to: participate in the community, achieve greater personal self-sufficiency, develop practical living and coping skills, and develop natural support networks through community integration.

Specialized Residential Homes

This program provides a warm atmosphere for adults diagnosed with a mental illness, developmental disability, and/or co-occurring disorders. The goal of this program, with individually designed service plans, is to improve the quality of life for residents by creating a supportive environment that fosters personal growth and recovery. The residential home is staffed with trained and qualified Program Support Staff twenty-four hours a day. Each home is managed by a Program Supervisor. An emergency on-call system is also available.

Community Living Supports

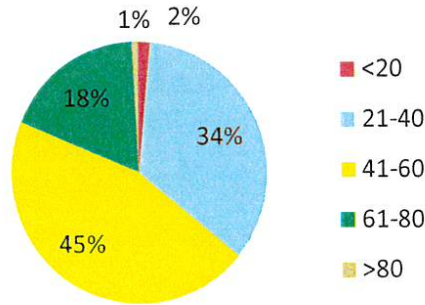
This program provides supports to individuals diagnosed with a mental illness, developmental disability and/or co-occurring disorders based upon their needs and desires in their own homes. Staff supports range from twenty-four hours a day to a few hours per week. The goal of this program is to assist individuals in their own homes and to maximize the amount of control they exert over their own lives.

CLO Case Management

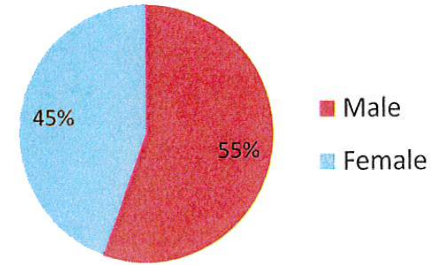
Community Living Options provides Integrated Recovery Supports to individuals diagnosed with a mental illness. Our emphasis is on providing comprehensive, coordinated, integrated care. The extensive documentation of health concerns and how these may affect behavioral health is a key strength of CLO service provision. CLO serves a niche population and the smaller size of our caseload allows us to provide exceptional case management, linking, coordinating, and management of both behavioral and physical health issues. Consumers, Program Supervisors, and other members of the service team have frequent and easy access to our case manager which diverts issues from becoming a crisis.

Consumer Demographics

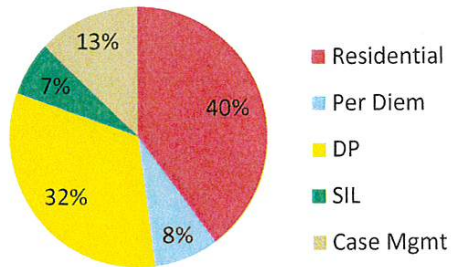
Consumer by Age



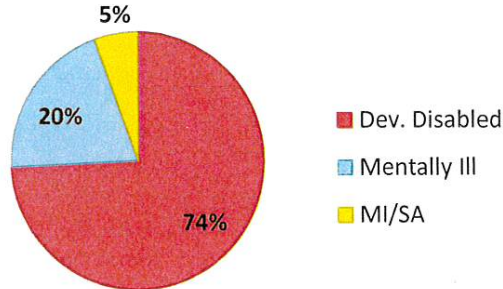
Consumer by Gender



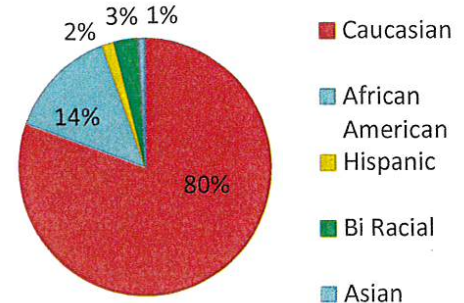
Consumer by Services Provided



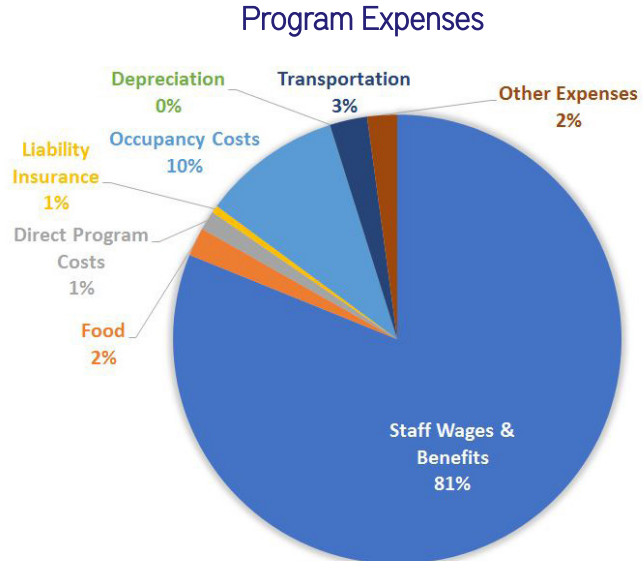
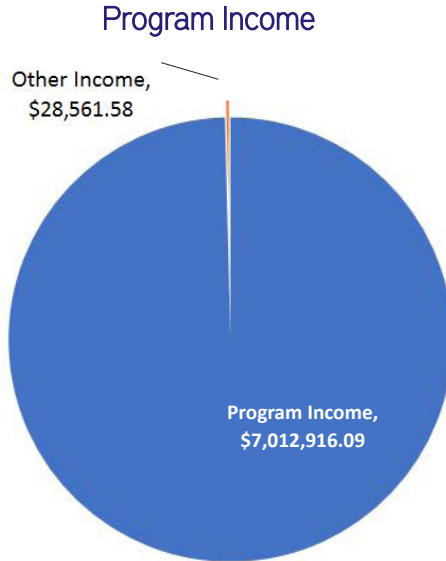
Consumer by Disability



Consumer by Ethnic Origin



Financial & Funding



Key Points Displayed Above Graphs:

Total Support & Revenue = \$7,041,477.67 Total Expenses = \$6,571,796.60 Change in Net Assets = \$469,681.07



Our Sincere Appreciation

Thank you so much to Meyer C. Weiner Company for their generous donation!
We sincerely appreciate Mr. Josh Weiner and his generous contribution to Community Living Options.
Left: Fi Spalvieri, Josh Weiner, Jenny Gately, Timothy Timmons, Dan Conklin.



Services

Developed around the goals of each person, our focus is to increase independence, promote community inclusion, and help each person live as members of their community.

Team-Oriented

Our staff goals promote a team-oriented, supportive, and inclusive atmosphere. CLO recognizes that its employees are one of its greatest assets.

Community Integration

Thanks to our donors, CLO promotes and provides opportunities to those we serve. Camp Amigo and Tigers & Growlers baseball games are just a few of the excursions that CLO is able to fund at little or no cost to those we provide service to.



This Year's Accomplishments

Acquiring properties to expand and better serve our community.

Receiving a contract to provide Case Management Services to individuals with a mental illness.

Utilizing electronic medication administration software which minimizes errors and increases reliability in our medication programs.

Receiving a generous donation from the Kalamazoo Community Foundation to provide outdoor recreational experiences to individuals we serve.

Celebrating our thirty year anniversary with our friends at the WMU Fetzer Center.

Next Year's Ambitions

Build and strengthen the organization through system expansion and program growth in Kalamazoo and surrounding areas.

Strengthen our capabilities to deliver quality services by using technology and electronic applications.

Ensure the CLO workforce is of the capacity, diversity, and skill level needed to meet the growing demand for a quality provider of services.

Expand our knowledge of working with the elderly population, becoming competent in providing dementia care.

“When we give cheerfully
and accept gratefully
everyone is blessed.”

- Maya Angelou





"They take me to camp and I have a good friends. I like here and the good staff that help and comfort me. I'm happy here."

- Bob Baker, Member of Oak Creek Program



COMMUNITY LIVING OPTIONS

"Together We Achieve"

626 Reed Street
Kalamazoo, MI 49001

(269) 343-6355
www.communitylivingoptions.org

Printing of this annual report was made possible
by a generous grant from Jaqua Realtors.